



ELECTRONICS, INC.

44 FARRAND STREET
BLOOMFIELD, NJ 07003
(973) 748-5089

NTE6200 thru NTE6210 Positive Center Tapped Silicon Rectifiers 30 Amp(15A per diode)

Features:

- Available in Standard (NTE6200 & NTE6202) and Fast (NTE6206 thru NTE6210) Recovery
- 250 Amps Peak One Half Cycle Surge Current
- Fast Recovery Types: $t_{rr} = 200ns$ Max
- TO3 Type Package

Absolute Maximum Ratings: ($T_A = +25^{\circ}C$ unless otherwise specified)

DC Blocking Voltage, V_{RM}

Working Peak Reverse Voltage, V_{DRM}

Peak Repetitive Reverse Voltage, V_{RRM}

NTE6200, NTE6206	200V
NTE6202, NTE6208	400V
NTE6210	600V

RMS Reverse Voltage, $V_{R(RMS)}$

NTE6200, NTE6206	140V
NTE6202, NTE6208	280V
NTE6210	420V

Peak Surge Current (Per Diode, 1/2 Cycle at 60Hz, (Non-Repetitive), $T_C = +100^{\circ}C$), I_{FSM} .. 150A

Peak Surge Current (Per Diode, 1 sec at 60Hz, $T_C = +100^{\circ}C$), I_{FRM} .. 50A

Average Forward Current (Per Diode, $T_C = +100^{\circ}C$), I_O .. 15A

Fusing Data, I^2T .. 85A²sec

Operating Junction Temperature Range, T_j .. -65° to +150°C

Storage Temperature Range, T_{stg} .. -65° to +150°C

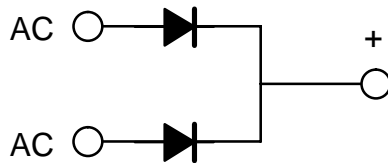
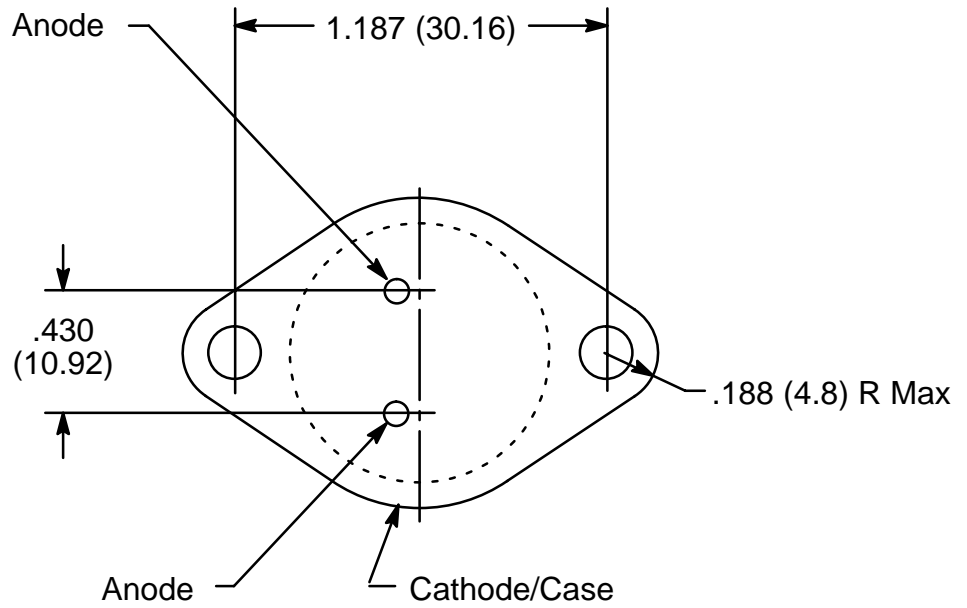
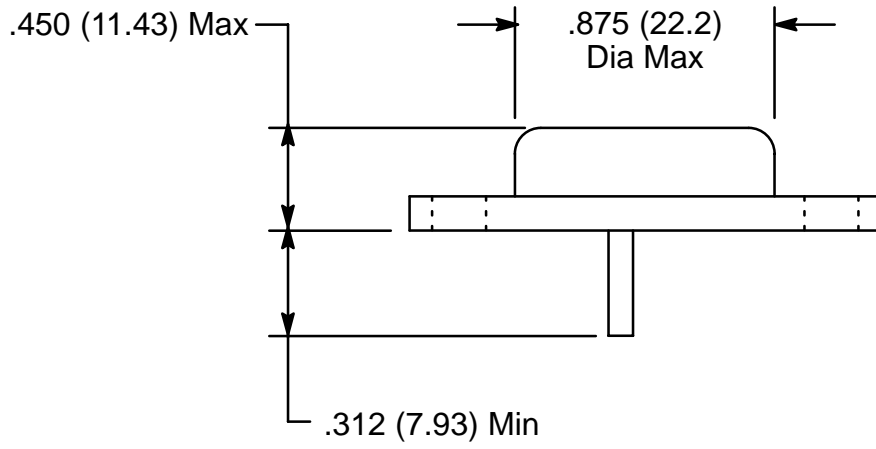
Maximum Thermal Resistance, Junction-to-Case, R_{thJC} .. 1.5°C/W

Electrical Characteristics: ($T_A = +25^{\circ}C$ unless otherwise specified)

Maximum Instantaneous Forward Voltage Drop (Per Diode @ 15A), V_{FM} .. 1.4V

Maximum Reverse Current (At Rated V_{RM} , $T_C = +100^{\circ}C$), I_{RM} .. 5mA

Maximum Reverse Recovery Time ($I_F = 1A$, $I_A = 2A$), t_{rr} .. 200ns



Common Cathode