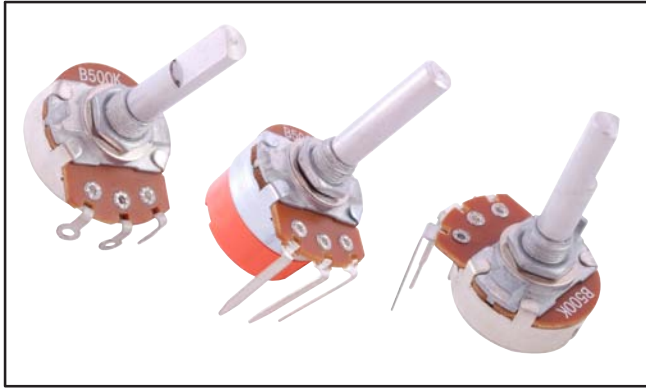


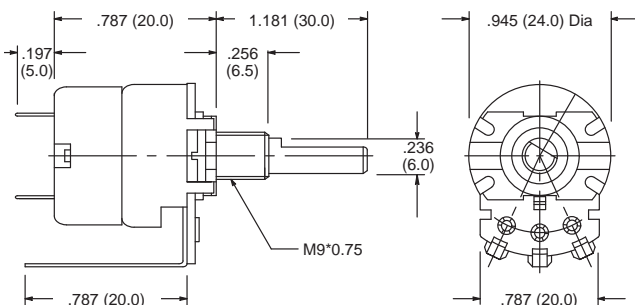
## Features

- Available in Linear and Audio Taper
- Switch Type Available in Both Audio and Linear Taper
- Solder Lug and Combination Type Terminals
- Perfect for Consumer Electronics Applications



| NTE Part No. | Value (Ohms) | Taper  | Switch | Terminal Style | Diag No. |
|--------------|--------------|--------|--------|----------------|----------|
| 502-0401     | 500          | Linear | No     | Combination    | P9       |
| 502-0402     | 1K           | Linear | No     | Solder Lug     | P10      |
| 502-0403     | 1K           | Audio  | Yes    | Combination    | P11      |
| 502-0404     | 1K           | Audio  | No     | Combination    | P9       |
| 502-0405     | 5K           | Audio  | Yes    | Combination    | P11      |
| 502-0406     | 5K           | Linear | No     | Solder Lug     | P10      |
| 502-0407     | 5K           | Audio  | No     | Combination    | P9       |
| 502-0408     | 10K          | Linear | No     | Solder Lug     | P10      |
| 502-0409     | 10K          | Linear | Yes    | Combination    | P11      |
| 502-0410     | 10K          | Audio  | No     | Combination    | P9       |
| 502-0411     | 10K          | Audio  | Yes    | Combination    | P11      |
| 502-0412     | 50K          | Linear | No     | Solder Lug     | P10      |
| 502-0413     | 50K          | Audio  | No     | Combination    | P9       |
| 502-0414     | 50K          | Audio  | Yes    | Combination    | P11      |
| 502-0415     | 100K         | Linear | No     | Solder Lug     | P10      |
| 502-0416     | 100K         | Audio  | No     | Combination    | P9       |
| 502-0417     | 100K         | Audio  | Yes    | Combination    | P11      |
| 502-0418     | 500K         | Linear | No     | Solder Lug     | P10      |
| 502-0419     | 500K         | Linear | Yes    | Combination    | P11      |
| 502-0420     | 500K         | Audio  | No     | Combination    | P9       |
| 502-0421     | 500K         | Audio  | Yes    | Combination    | P11      |
| 502-0422     | 1M           | Linear | No     | Solder Lug     | P10      |
| 502-0423     | 1M           | Linear | Yes    | Combination    | P11      |
| 502-0424     | 1M           | Audio  | No     | Combination    | P9       |
| 502-0425     | 1M           | Audio  | Yes    | Combination    | P11      |

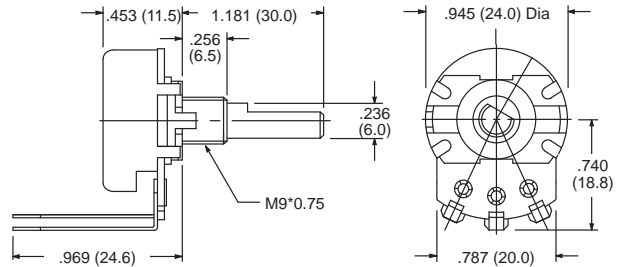
## P11



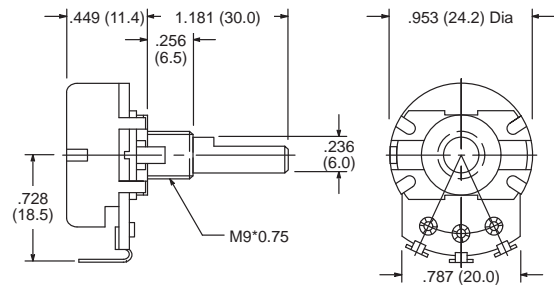
# 24mm Potentiometer

## Potentiometer – 1/2 Watt and 1/4 Watt, 6mm dia. shaft, Single Turn

### P9



### P10



## Specifications

### Electrical

**Resistance Range – Linear Taper:** 500Ω to 1 Meg Ω  
**– Audio Taper:** 1KΩ to 1 Meg Ω

**Resistance Tolerance:** ±20%

**Sliding Noise:** less than 47mV

**Residual Resistance:** ≤ 20Ω (R > 10K)  
 ≤ 10Ω (R ≤ 10K)

**Insulation Resistance:** more than 100 Meg Ω at 500VDC

**Switch Contact Resistance:** less than 0.3Ω

**Operating Voltage:** 250VAC

**Rated Power – Linear Taper:** 0.5W  
**– Audio Taper:** 0.25W

**Switch Rated Power:** 125VAC at 1A

**Withstand Voltage:** 1 minute at 500VAC

### Mechanical

**Total Rotation Angle:** 300° ±10°

**Switch Angle:** 50° ±5°

**Rotation Torque:** 30gf.cm to 200gf.cm

**Switch Action:** 150gf.cm to 4350gf.cm

**Rotation Stopper Strength:** 5Kgf.cm Min

**Shaft Push-Pull Strength:** 7Kgf. Min

**Rotation Life:** 15,000 cycles

**Switch Life:** 10,000 cycles

**Mounting Hole:** .312" (7.9mm) dia,

### Environmental

**Operating Temperature:** -10°C to +70°C

**Resistance to Soldering Heat:** 260°C for 3 seconds