

# Magnetic Alarm Reed Switch

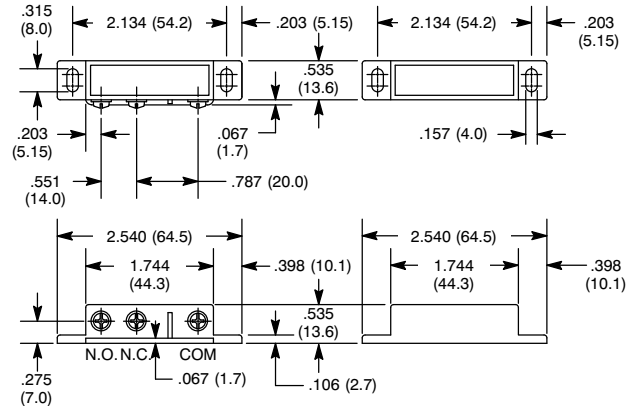
## Features

- Normally Closed & Normally Open



NTE Type No.	Circuitry	Action	Actuator	Diag No.
54-627	SPDT	NO without Magnet or NC without Magnet	Magnet	S99

## S99



## Specifications

**Contact Rating:** 3 W/VA  
**Contact Resistance:** 200 megohms  
**Contact Material:** Ruthenium Oxide over Rhodium  
**Voltage Rating:** 125 VAC, 100 VDC  
**Switching Current:** 250mA  
**Insulation Resistance:** 10 gigohms  
**Shock Resistance:** nil  
**Vibration Resistance:** nil  
**Life Expectancy:** 10,000,000 cycles  
**Operating Gap:** 1.180" (3cm) max.  
**Terminal Type:** Screw  
**Mounting Hole:** .157" (4mm)

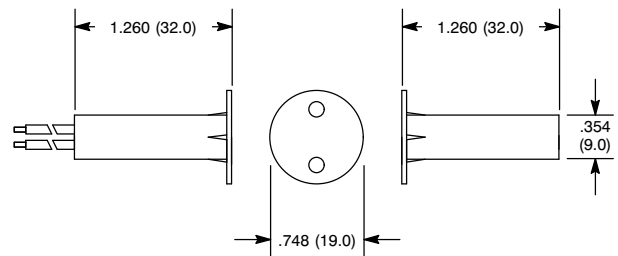
# Magnetic Alarm Reed Switch

## Features

- 3/8" (9mm) Diameter Press Fit
- Operating Gap 5/8" (16mm) min.
- 18" Wire Leads
- 3/4" (19mm) Collar Flange for Better Retention



## S100



## Specifications

**Contact Rating:** 10W/VA  
**Contact Resistance:** 150 milliohms.  
**Contact Material:** Ruthenium Oxide over Palladium  
**Switching Voltage:** 200 VDC max.  
**Switching Current:** 500mA max.  
**Insulation Resistance:** 10 gigohms  
**Shock Resistance:** 30G for 11mS  
**Vibration Resistance:** 20G (10 to 1000Hz)  
**Life Expectancy:** 20,000,000 cycles (resistive load, 12VDC, 250mA)  
**Operating Gap:** .629" (16mm) min.  
**Terminal Type:** Wire Leads  
**Mounting Hole:** .375" (9mm)

NTE Type No.	Circuitry	Action	Actuator	Diag No.
54-628	SPST-NO	NO fo Closed Loop System	Magnet	S100

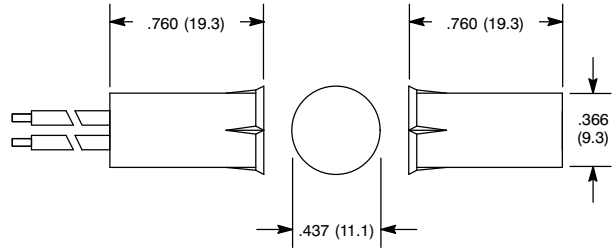
# Magnetic Alarm Reed Switch

## Features

- 3/8" (9mm) Dia with 18" Long Wire Leads
- Easy & Quick Installation
- Longer Length
- Operate Gap 3/4" (19mm) min.



## S101



## Specifications

**Contact Rating:** 10W/VA  
**Contact Resistance:** 150 milliohms.  
**Contact Material:** Ruthenium Oxide over Palladium  
**Switching Voltage:** 200 VDC max.  
**Switching Current:** 500mA max.  
**Insulation Resistance:** 10 gigohms  
**Shock Resistance:** 30G for 11mS  
**Vibration Resistance:** 20G (10 to 1000Hz)  
**Life Expectancy:** 20,000,000 cycles (resistive load, 12VDC, 250mA)  
**Operating Gap:** .748" (19mm) min.  
**Terminal Type:** Wire Leads  
**Mounting Hole:** .375" (9mm)

NTE Type No.	Circuitry	Action	Actuator	Diag No.
54-629	SPST-NO	NO fo Closed Loop System	Magnet	S101

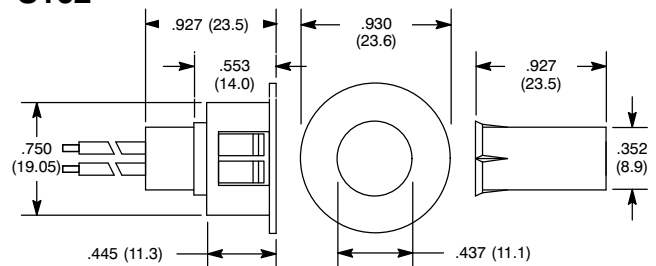
# Magnetic Alarm Reed Switch

## Features

- 3/8" (9mm) Dia with Adaptor Holder
- Wide Operating Gap 3/4" (19mm) min.
- Easy & Quick Installation
- 3/4" Adaptor/Holder



## S102



## Specifications

**Contact Rating:** 10W/VA  
**Contact Resistance:** 150 milliohms.  
**Contact Material:** Ruthenium Oxide over Palladium  
**Switching Voltage:** 200 VDC max.  
**Switching Current:** 500mA max.  
**Insulation Resistance:** 10 gigohms  
**Shock Resistance:** 30G for 11mS  
**Vibration Resistance:** 20G (10 to 1000Hz)  
**Life Expectancy:** 20,000,000 cycles (resistive load, 12VDC, 250mA)  
**Operating Gap:** .748" (19mm) min.  
**Terminal Type:** Wire Leads  
**Mounting Hole:** .375" (9mm)

NTE Type No.	Circuitry	Action	Actuator	Diag No.
54-631	SPST-NO	NO for Closed Loop System	Magnet	S102

# Magnetic Alarm Reed Switch

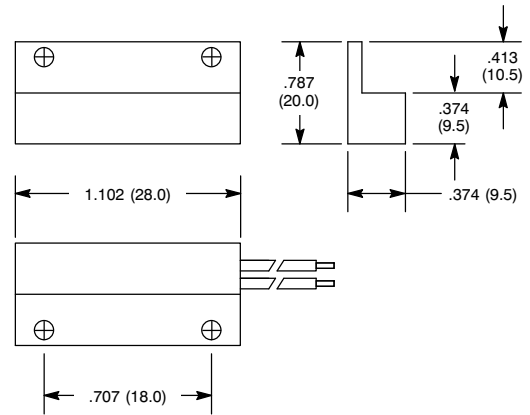
## Features

- Mini Stick-On Surface Mount Contact with Side Leads
- 18" Long Side Wire Leads
- Adhesive & Screw Mounting
- Operate Gap 3/4" (19mm) min.



NTE Type No.	Circuitry	Action	Actuator	Diag No.
54-632	SPST-NO	NO for Closed Loop System	Magnet	S103

## S103



## Specifications

**Contact Rating:** 10W/VA  
**Contact Resistance:** 150 milliohms.  
**Contact Material:** Ruthenium Oxide over Palladium  
**Switching Voltage:** 200 VDC max.  
**Switching Current:** 500mA max.  
**Insulation Resistance:** 10 gigohms  
**Shock Resistance:** 30G for 11mS  
**Vibration Resistance:** 20G (10 to 1000Hz)  
**Life Expectancy:** 20,000,000 cycles (resistive load, 12VDC, 250mA)  
**Operating Gap:** .748" (19mm) min.  
**Terminal Type:** Wire Leads  
**Mounting Hole:** .250" (6.35mm)

# Magnetic Roller Ball Switch

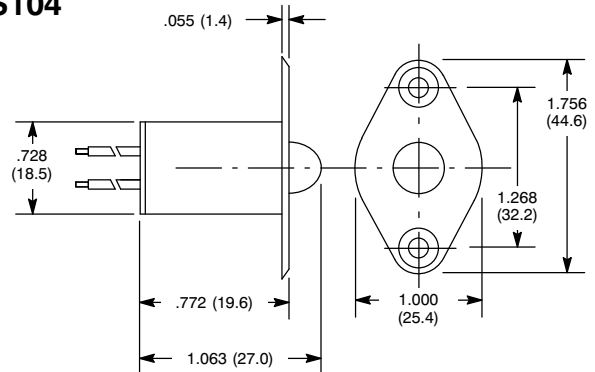
## Features

- 3/8" Dia with 18" Long Wire Leads
- Flange for Reliable Retention
- Suitable For Sliding as well as Swing Doors



NTE Type No.	Circuitry	Action	Actuator	Diag No.
54-633	SPST-NO	NO for Closed Loop System	Magnet	S104

## S104



## Specifications

**Contact Rating:** 10W/VA  
**Contact Resistance:** 150 milliohms.  
**Contact Material:** Ruthenium Oxide over Palladium  
**Switching Voltage:** 200 VDC max.  
**Switching Current:** 500mA max.  
**Insulation Resistance:** 10 gigohms  
**Shock Resistance:** 30G for 11mS  
**Vibration Resistance:** 20G (10 to 1000Hz)  
**Life Expectancy:** 20,000,000 cycles (resistive load, 12VDC, 250mA)  
**Terminal Type:** Wire Leads  
**Mounting Hole:** .375" (9mm)

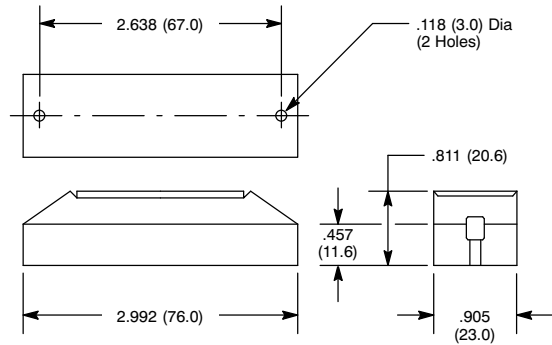
# Panic Switch

## Features

- Surface Mount Type
- Push Button Function
- Emergency Marking on the Button



## S105



## Specifications

**Contact Rating:** 10W/VA  
**Contact Resistance:** 150 milliohms.  
**Contact Material:** Silver over Palladium  
**Switching Voltage:** 200 VDC max.  
**Switching Current:** 500mA max.  
**Insulation Resistance:** 10 gigohms  
**Shock Resistance:** 30G for 11mS  
**Vibration Resistance:** 20G (10 to 1000Hz)  
**Life Expectancy:** 20,000,000 cycles (resistive load, 12VDC, 250mA)  
**Terminal Type:** Y Type Tin Plated Brass

NTE Type No.	Circuitry	Action	Actuator	Diag No.
54-634	SPST-NO	NO for Closed Loop System	Microswitch	S105

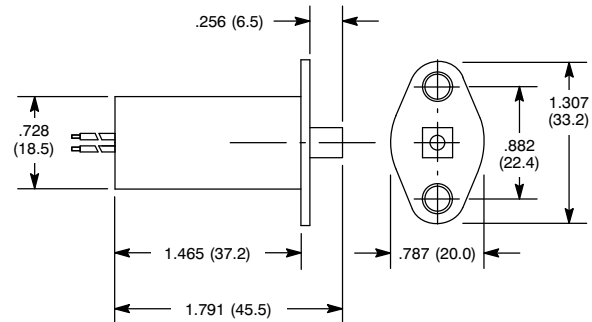
# Magnetic Plunger Switch

## Features

- 3/8" Dia Mounting Hole
- Flange for Reliable Retention
- 3mm Pre-Travel Stroke and 7mm Overall Operating Stroke
- 18" Long Wire Leads
- Screw Provided



## S106



## Specifications

**Contact Rating:** 10W/VA  
**Contact Resistance:** 150 milliohms.  
**Contact Material:** Ruthenium Oxide over Palladium  
**Switching Voltage:** 200 VDC max.  
**Switching Current:** 500mA max.  
**Insulation Resistance:** 10 gigohms  
**Shock Resistance:** 30G for 11mS  
**Vibration Resistance:** 20G (10 to 1000Hz)  
**Life Expectancy:** 20,000,000 cycles (resistive load, 12VDC, 250mA)  
**Terminal Type:** Wire Leads  
**Mounting Hole:** .375" (9mm)

NTE Type No.	Circuitry	Action	Actuator	Diag No.
54-635	SPST-NO	NO for Closed Loop System	Magnet	S106

# Magnetic Alarm Reed Switch

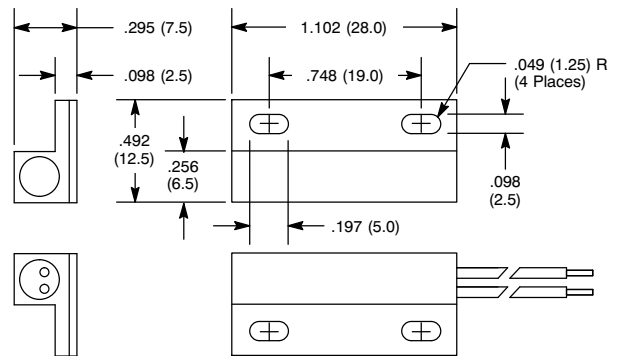
## Features

- Mini Stick-On Contact with Flange Center Leads
- 18" Leads
- Adhesive and Screw Mount
- Standard Gap: 1" (25mm)



NTE Type No.	Color	Circuitry	Action	Actuator	Diag No.
54-630	White	SPST-NO	NO for Closed Loop System	Magnet	S107
54-636	Brown	SPST-NO	NO for Closed Loop System	Magnet	S107

## S107



## Specifications

**Contact Rating:** 10W/VA

**Contact Resistance:** 150 milliohms.

**Contact Material:** Ruthenium Oxide over Palladium

**Switching Voltage:** 200 VDC max.

**Switching Current:** 500mA max.

**Insulation Resistance:** 10 gigohms

**Shock Resistance:** 30G for 11mS

**Vibration Resistance:** 20G (10 to 1000Hz)

**Life Expectancy:** 20,000,000 cycles (resistive load, 12VDC, 250mA)

**Terminal Type:** Wire Leads

**Mounting Hole:** .200" (5mm)